



IP65 Waterproof Panel Light

SC-PSC24XE3030-W18W

SC-PSC24XE3060-W24W

SC-PSC24XE6060-W40W

SC-PSC24XE3012-W40W



Description

- 1.Adopt IP65 waterproof power supply and connector,the panel light can reach IP65 waterproof grade.
- 2.AL6063 aluminum housing,13mm thickness,very strong structure,not easy to bend during using.
- 3.Flat frame design,without any gap at 4 corners.
- 4.Using PMMA light guide plate,up to 90% light transmittance,long life time up to 50,000 hours.
- 5.Bending back cover design to prevent light leakage from back side.
- 6.Special waterproof foam installed at the front side between aluminum housing and diffuser,also at the back side between the back cover and LGP,to achieve the waterproof effect.
- 7.Three installation types:Recessed,surface and suspending.

Applications

The product is suitable for installation at damp environment for use such as bathrooms, kitchens, indoor swimming pools, operation rooms of hospital, etc.

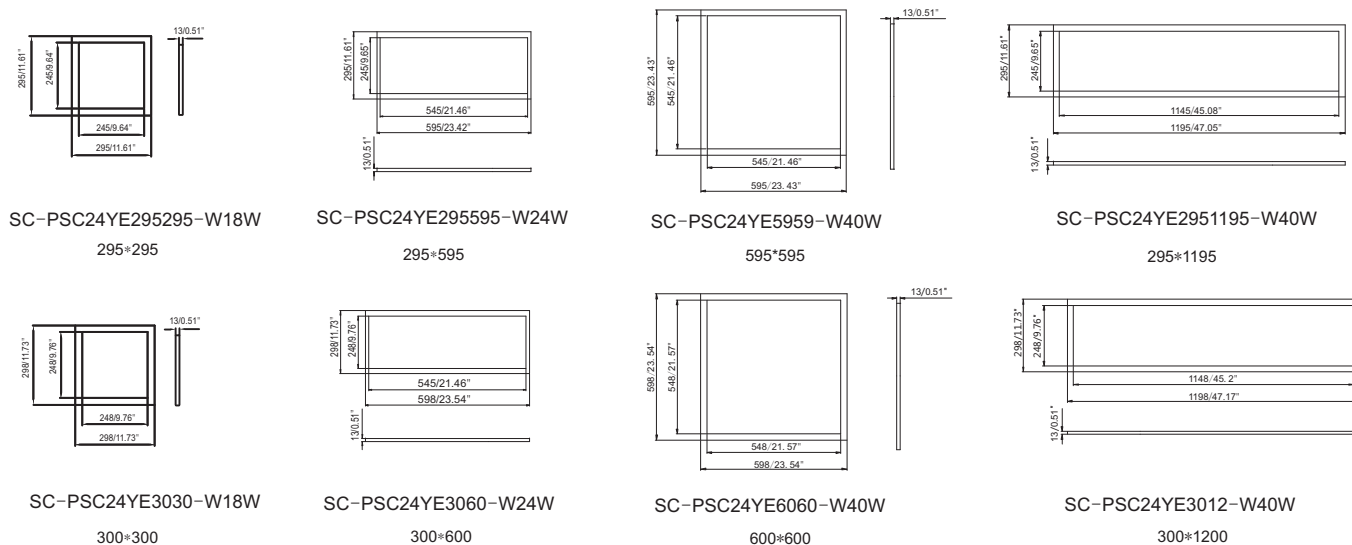




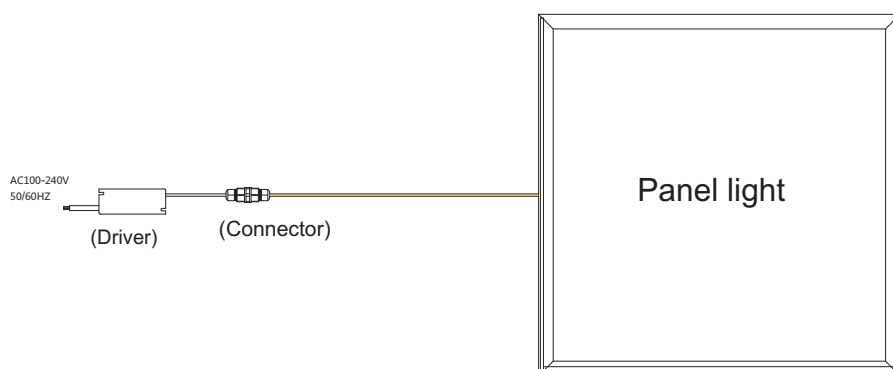
Specifications

Model	CCT	LED TYPE	Power (±10%)	Lumen (±10%)	PF value	CRI	Application environment	Input voltage	Protection grade
SC-PSC24CE3030-W18W	6000-6500K	4014	18W	1656LM	>0.9	≥80	-10°C-40°C	100-240V /50/60Hz	IP65
SC-PSC24NE3030-W18W	3800-4200K	4014	18W	1656LM	>0.9				
SC-PSC24WE3030-W18W	2800-3200K	4014	18W	1476LM	>0.9				
SC-PSC24CE3060-W24W	6000-6500K	4014	24W	2184LM	>0.9				
SC-PSC24NE3060-W24W	3800-4200K	4014	24W	2184LM	>0.9				
SC-PSC24WE3060-W24W	2800-3200K	4014	24W	1968LM	>0.9				
SC-PSC24CE6060-W40W	6000-6500K	4014	40W	4000LM	>0.9				
SC-PSC24NE6060-W40W	3800-4200K	4014	40W	4000LM	>0.9				
SC-PSC24WE6060-W40W	2800-3200K	4014	40W	3600LM	>0.9				
SC-PSC24CE3012-W40W	6000-6500K	4014	40W	4000LM	>0.9				
SC-PSC24NE3012-W40W	3800-4200K	4014	40W	4000LM	>0.9				
SC-PSC24WE3012-W40W	2800-3200K	4014	40W	3600LM	>0.9				

Dimensions(Unit:mm/inch)



Connection drawing

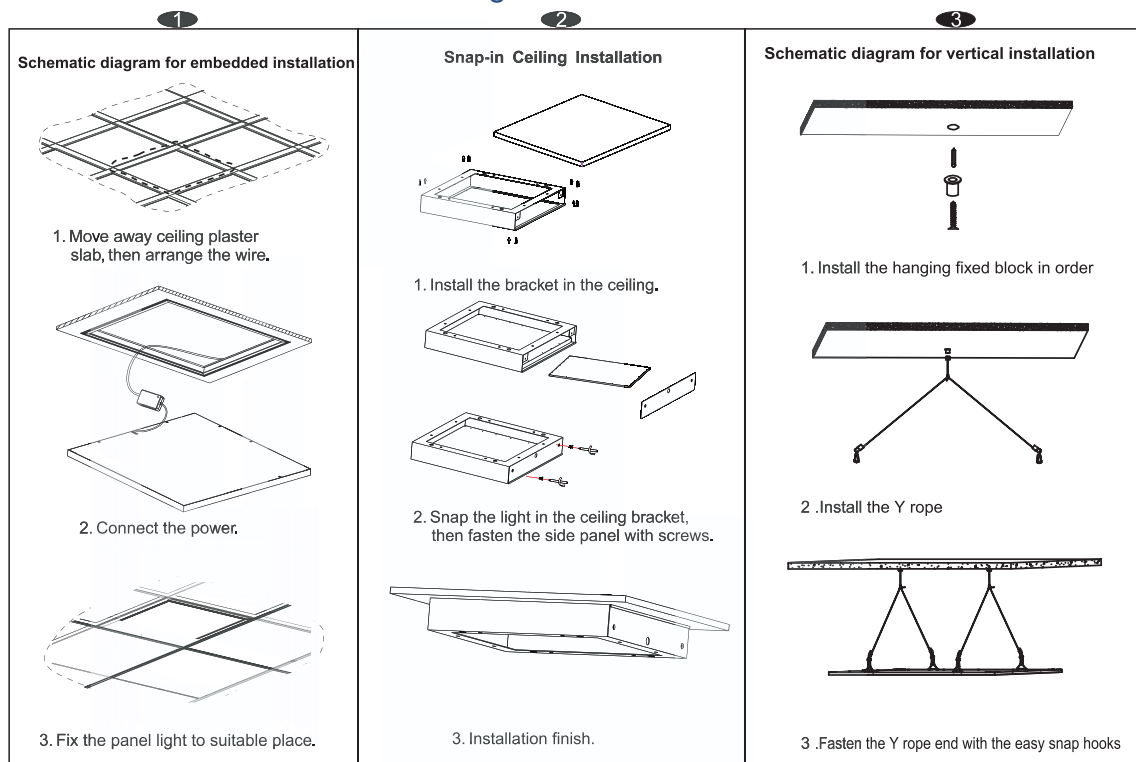




Installation requirements

1. Cut off the power supply first before installation.
2. Ensure that the installed object can bear the lamp weight. Open the groove on the ceiling according to corresponding size. Then install the lamp into the clamping groove on the ceiling.
3. Then connect wire attached to the lamp onto the corresponding power cord and carry out insulation sealing at the joint.

Installation and connection drawing



Product packing information

600x600 lamp:	300x1200 lamp:
<ul style="list-style-type: none"> ● net weight/pc:2.4KG ● gross weight/CTN: 22.8kg ● inner size:636*680*38mm ● carton size:650*260*710mm ● 1pc/inner box,6 inner boxes/carton 	<ul style="list-style-type: none"> ● netweight/pc:2.5KG ● grossweight/CTN:23.5kg ● innersize:1235*380*38mm ● cartonsize:1250*260*410mm ● 1pc/innerbox,6innerboxes/carton
300x300 lamp	300x600 lamp:
<ul style="list-style-type: none"> ● net weight/pc:0.8kg ● gross weight/CTN:14.2kg ● inner size: 340*385*46mm ● carton size: 480*365*405mm ● 1pc/inner box,10 inner boxes/ carton 	<ul style="list-style-type: none"> ● netweight/pc:1.4KG ● grossweight/CTN:12KG ● innersize:635*380*46mm ● cartonsize:650*260*410mm ● 1pc/innerbox,5innerboxes/carton

! Note

1. Please read the product specification carefully first to confirm that the use environment is in line with the condition on the specification before it is used.
2. Please confirm the input voltage and frequency before use.
3. The lamp must be installed by professional personnel.
4. If the power cord and case of the products are damaged, it will be regarded as disqualified product and should not be used.
5. Dangerous high voltage. Non professional personnel should not repair.
6. If external soft cable or wire of the product is damaged, the wire should be replaced by manufacturer or service agent or personnel with similar qualification to avoid danger.