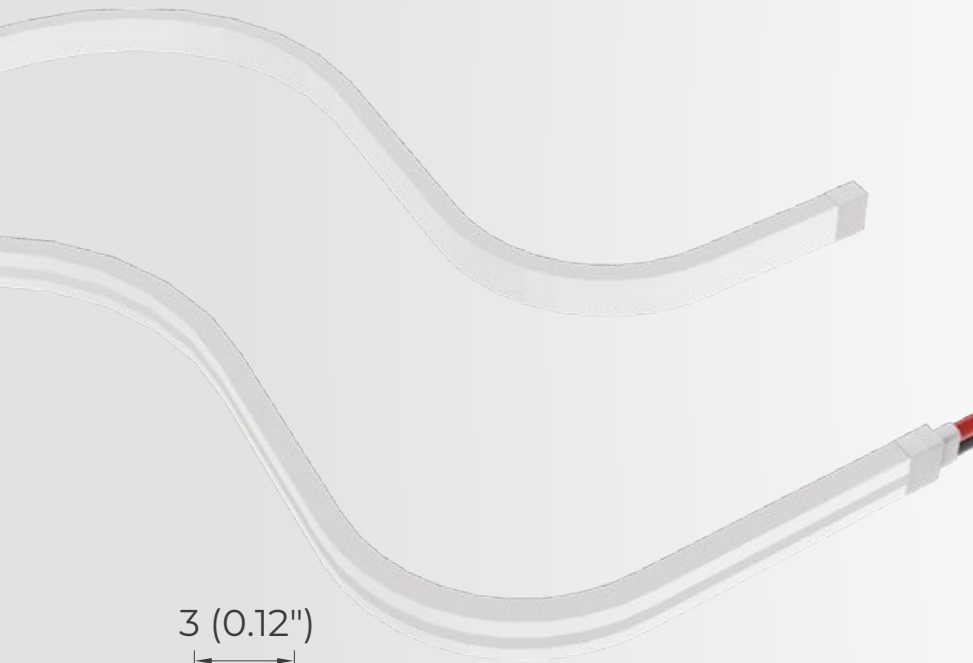


ULTRA-NARROW *NEON FLEX*

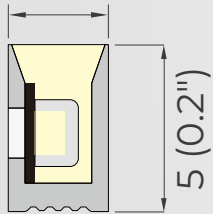


Slim & Narrow

3×5mm slim & narrow, easy to conceal, suitable for precise, micro-space and seamless embedded applications.



3 (0.12")





CR190

Vivid, true-to-life colors for premium lighting effects.

Smooth seamless linear glow

High-Density 1510 LEDs for Smooth, Even Glow.

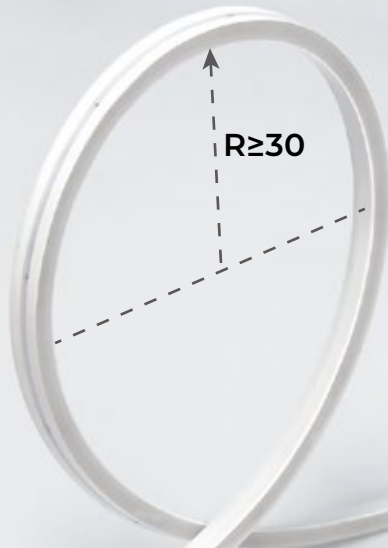
Flexible & Easy Installation.

Customize your length with easy cutting,
perfect for any installation scenario.



Flexible Bending for Curves

Bending radius ≥ 30 mm,
easily fits curved surfaces and corners



IP65 Waterproof.

Heat-resistant, UV-resistant, and IP65 waterproof for versatile indoor and outdoor use.





APPLICATION

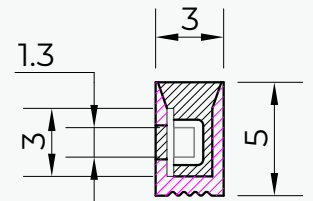
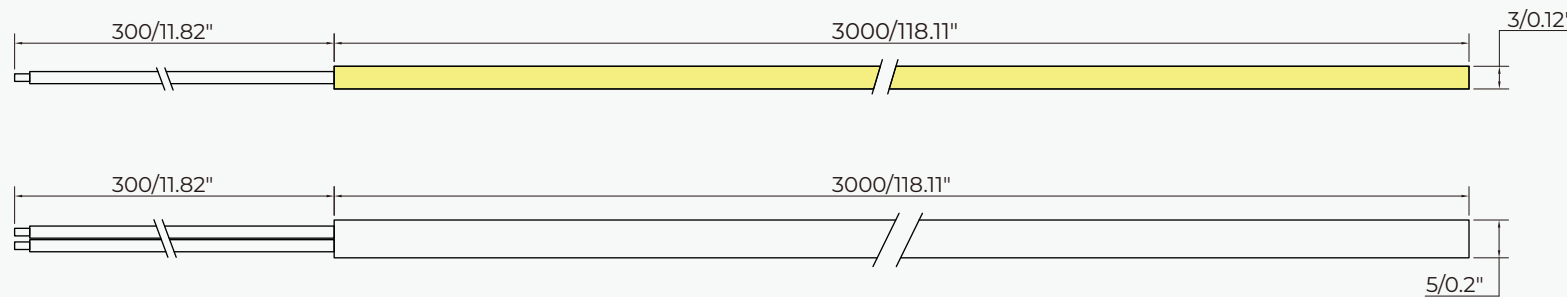
Ideal for car lighting, furniture, displays, architectural decoration, signage, narrow-gap installation, and commercial or DIY ambient projects.

SPECIFICATIONS

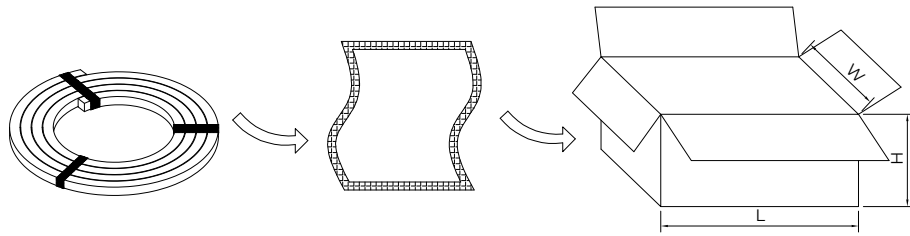
Model	Wave Length & CCT Range(for LED only)		Luminous Flux (lm/m)	CRI	LED Type	LED Qty (LEDs/m)	Rated Watt (w/m)	DC Voltage (V)	Max.Length (M)	Min.Length (mm)	PCB Width (mm)	IP Grade	Beam Angle
SC-1510-08-JS0305W-XX-24-320-3-IP65	WW		360	90	1510	320	6	24	3	40	3	IP65	120°
	NW		380										
	W		390										
	R	620-630nm	/	/									
	G	515-530nm	/										
	B	460-470nm	/										

DIMENSIONS

(Unit: mm/inch)

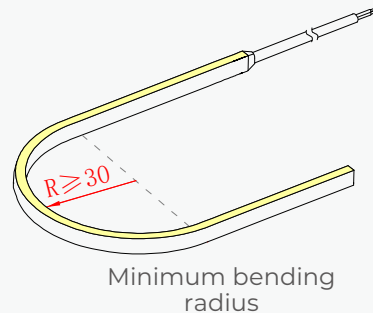
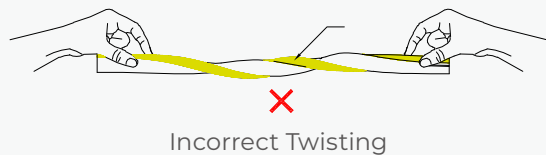
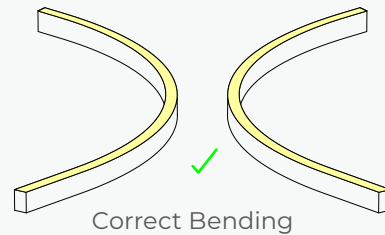
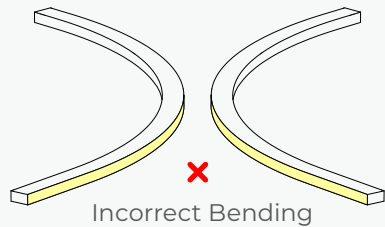


PACKAGING INFORMATION



LED strip + Anti-static bag		Packing Box		
Part Number	Gross Weight per Reel	QTY per Carton	Gross Weight	Size(cm/inch)
SC-1510-08-JS0305W-XX-24-320-3-IP65	0.35KG	60	22KG	59cm*32.5cm*21.1cm 23.23"*12.8"*8.31"

BENDING DIRECTION



INSTALLATION REQUIREMENT



- The LED strip and accessories can't be squeezed or folded.
- PCB conductive parts can't be damaged during installation.
- Installation must conform to electrical safety standard. The LED strip can only be installed by professionals.
- Ensure power supply transform operating load with transformer.
- When installing on metal or conductor surface, insulation protection need to be provided to the contact area.
- Observe positive and negative polarity, ensure correct connection to avoid damaging LED strip.
- During installation, please prevent static electricity.
- The product need anti-corrosion environment.