

SC-SW4-XX-24



Available colors



Clamp Shape



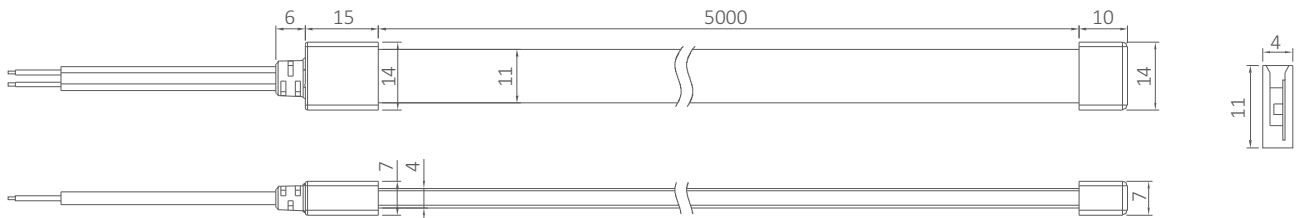
Features

- IP67
- 2835 LED
- 7.6W/M
- 24V DC
- CRI >80
- Dot-free illumination
- Side View: Bend direction horizontally
- Indoor and outdoor application
- Dimension:4×11mm
- Silica gel

Technical parameters

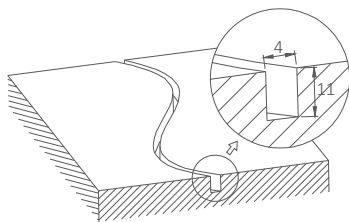
Model	Luminous Flux (lm/m)	Max.Length (m)	Min.Length (m)	DC Voltage (V)	LED Qty. (pcs/m)	Rated Watt (w/m)
SC-SW4-W-24	230	5	0.0625	DC24	128	7.6
SC-SW4-NW-24	200					
SC-SW4-WW-24	185					

Dimensions (unit: mm)

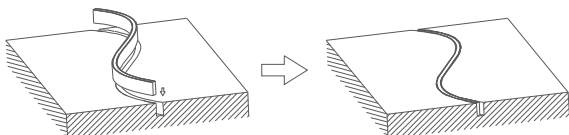


Installation diagram

1. As figure 1, dig a 11*4mm groove on the wall according to the shape needed;

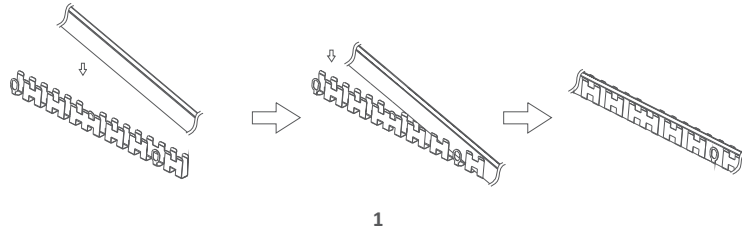


2. As figure 2, press the LED strip into groove and finish the installation.

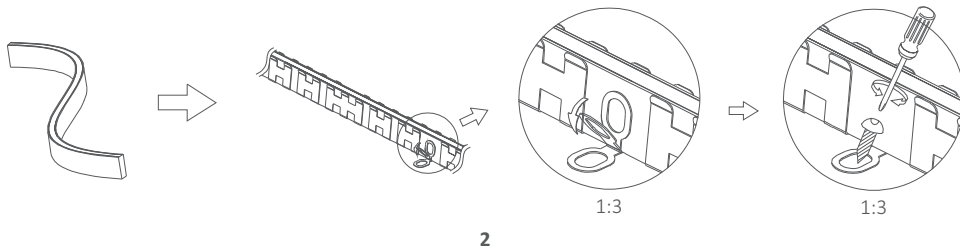


Installation Diagram of Clamp Shape

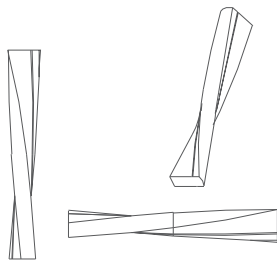
- As shown in diagram 1, put the LED strip into the clamp.



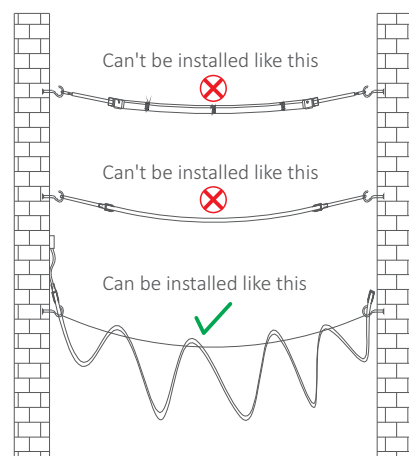
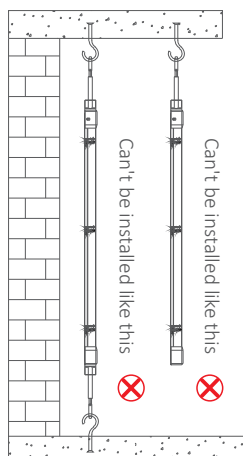
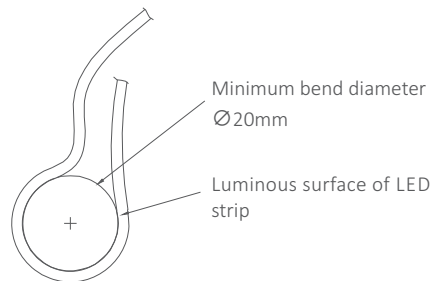
- As shown in diagram 2, bend the LED strip into the shape needed, then bend the screw hole so as to screw the LED strip on the installation surface. Finally, the installation is completed.



Installation Precautions



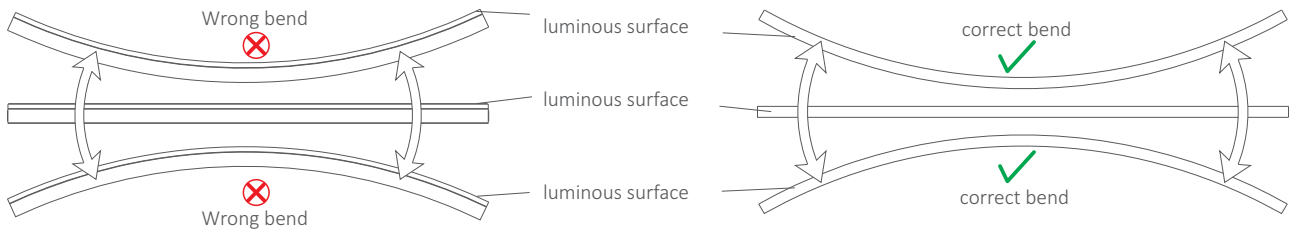
Do not twist like this.



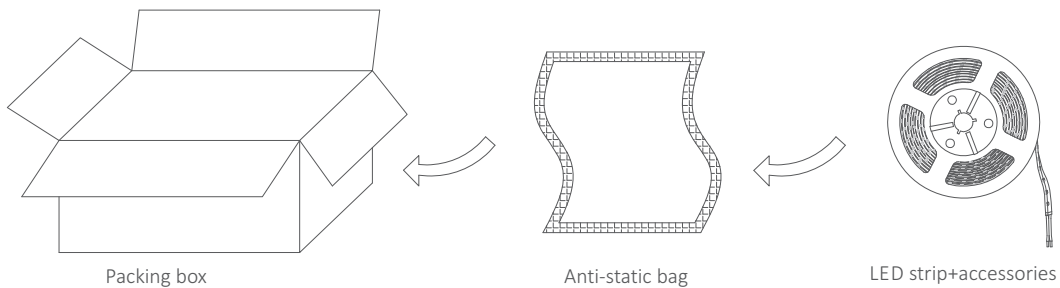
Can't be installed like this

Can't be installed like this

Can be installed like this



Packaging information



Installation requirement

- Install the LED strip on flame-retardant surface, thickness of wood and material exceed 2mm;
- Please read the specification first, to make sure the service environment matches the conditions in the specification before using;
- The LED strip and other accessories can't be extruded and folded;
- The conducting components of PCB can't be damaged;
- Installation of LED strip must comply with electrical safety standard. Only professionals can install the LED strip;
- Install the strip according to correct positive and negative polarity, otherwise the strip will be damaged;
- For safety, recommend parallel connection; ensure power supply operate load with transformer;
- Cut LED strip according to Logo on the LED strip;
- When install on the metallic surface or conductive surface, deal the touch area with insulation;
- Please pay attention to preventing electrostatic during installation. The product can only be used in corrosion-proof environment, which avoid damp, water drop or other disadvantage elements.
- Serial connection can't exceed the max. length, and IE3 must be used with aluminum profile and other radiators;
- Cut LED strip according to the mark logo.



Yijia Industrial Park, Fuqian Road, Guanlan Town, LongHua, Shenzhen, Guangdong, China

Tel: +86-755-27608650
 Fax: +86-755-27608651
www.signcomplex.com
sales@signcomplex.com