

X-Ribbon™

silicon sleeve type



X-Ribbon™ features 2-line high brightness SMD LEDs on a 16mm wide FPC board. Like other Signcomplex flexible strips, X-Ribbon™ runs 5 meters a reel and it stands out with the remarkably light output. With CCT 6000K each meter of X-Ribbon™ gives more than 1,000 lumens meanwhile the whole strip gets no heat. Besides white color CCT 3000K, 4000-4500K and 6000K, other colors are also offered to customers. It definitely will be considered a good light source for signage, contour and canopy decorative purpose.

X-Ribbon™ is designed to be easily used by end users which has no professional technology at all. Consumers can cut the strip along the marks on PCB and do the join work again with our connector, so no any length of X-Ribbon™ will be wasted.



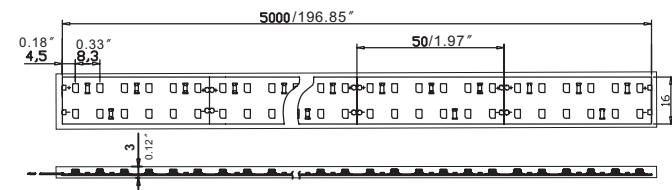
Basic technical data

Model No.	Color	CRI	LED type	LED q'ty	CCT	lumen/m	lux/m height 1m	Voltage	Current/reel	Power consumption/reel	
SC-W1XID1-R-24V	red	■	3528 SMD LED	1200	N/A	136	6.4	24V DC	3.75A	90W	
SC-W1XID1-Y-24V	yellow	■				119	5.9		3.5A	84W	
SC-W1XID1-G-24V	green	■				631	27.0		3.3A	79W	
SC-W1XID1-B-24V	blue	■				170	8.3		3.5A	84W	
SC-W1XID1-WW-24V	warm white	□			74	3000-3500K	1115		50.4	3.2A	77W
SC-W1XID1-NW-24V	neutral white	□			74	4000-4500K	1143		50.9	3.2A	77W
SC-W1XID1-W-24V	white	□	74	5800-6500K	1175	51.5	3.3A	79W			

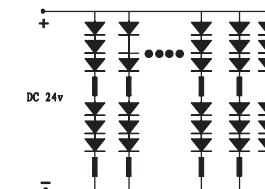
- 5m as the standard packing length
- Packing material is antistatic hot-sealing film bag
- Cuttable every 6 LEDs (one line)
- 3M adhesive tape on ribbon backside
- Ribbon width 16mm
- Totally waterproof, IP65
- LED distance 8.3mm and cut section length 50mm.



Dimension drawing (Unit:mm)



SC-W1XID1-WW/NW/W/R/G/B/Y-24V



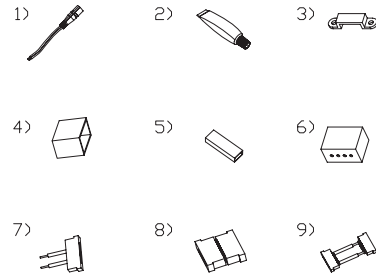
Possible applications with X-Ribbon™

- Cove lighting
- Architectural lights for canopy, corridor, window, archway
- Backlight or edge lighting for signage
- DIY lights for home use- Path and contour marking
- Decorative lights for holiday, event, show, exhibition

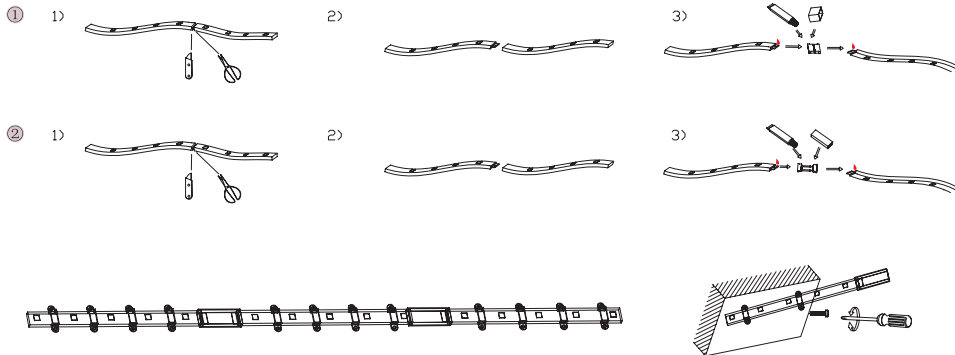




Accessories



Link options



Assembly Information

- Solder connection should only be performed on designated solder pads (marked "+/-"). During soldering, don't exceed the maximum soldering time of 10 seconds and the maximum soldering temperature of 260 Celsius degrees.
- The smallest unit (50mm - 6 LEDs) can be removed by cutting with scissors between the designated solder pads.
- The mounting of the strip is facilitated by means of the double-sided adhesive on the back-surface of the strip. Care must be taken to provide a clean and dry mounting surface, free of oils or silicone coatings as well as dirt particle. The mounting substrate must have sufficient structural integrity. Take care to completely remove the adhesive backing. Once the strip is appropriately positioned. Press on the strip with about 20N/cm² (refer to application techniques of 3M adhesive transfer tapes).
- The minimum bending radius is 2 cm. The strip may be bent over a smaller radius of the circuit board containing no electronic components and such bends should be made once and fixed in position to avoid cyclic fatigue.

Safety Information

- The strip itself and all its components may not be mechanically stressed.
- Assembly must not damage or destroy conducting paths on the circuit board.
- Installation of LED ribbon (with power supplies) needs to be made with regard to all applicable electrical and safety standards. Only qualified personnel should be allowed to perform installations.
- Correct electrical polarity needs to be observed. Wrong polarity may destroy the strip.
- Parallel connection is highly recommended as safe electrical operation mode.
- Serial connection is not recommended. Unbalanced voltage drop can cause hazardous overload and damage the strip.
- Please ensure that the power supply is of adapters power to operate the total load.
- When mounting on metallic or otherwise conductive surfaces, there needs to be an electrical isolation points between strip and the mounting surface.
- Pay attention to standard ESD precautions when installing the strip.
- Damaged by corrosion will not be honored as a materials defect claim. It is the user's responsibility to provide suitable protection against corrosive agents such as moisture and condensation and other harmful elements.

Signcomplex Limited Warranty

Signcomplex warrants this product ("Product") against defects in material or workmanship for a period of three years from the date of purchase. If this Product is determined to be defective, Signcomplex will repair or replace the Product, at its option. This warranty does not cover cosmetic damage or damage due to acts of God, accident, misuse, abuse, negligence, commercial use, or modification of, or to any part of the Product. This warranty does not cover damage due to improper operation or maintenance, connection to improper voltage supply, or attempted repair by anyone than a facility authorized by Signcomplex to service the Product.

Repair or replacement as provided under this warranty is the exclusive remedy of the customer. Signcomplex shall not be liable for any incidental or consequential damages for breach of any express or implied warranty on this Product except to the extent prohibited by applicable law, any implied warranty of merchantability or fitness for a particular purpose on this Product is limited in duration to the duration of this limited warranty.

Some states do not allow the exclusion or limitation of incidental or consequential damages, or allow limitations on how long an implied warranty lasts, so the above limitations or exclusions may not apply to you. This warranty gives you specific legal rights, and you may have other rights which vary from state to state.

Only Signcomplex may change, amend or modify the terms of this Limited Warranty and any such change, amendment or modification shall be in writing and issued by Signcomplex. To obtain warranty service and shipping information call +86 755 2760 8650 or e-mail info@signcomplex.com. You must provide proof of purchase in the form of a bill of sale or receipted invoice which is evidence that the Product is within the warranty period to obtain warranty service. Consumers have legal rights under applicable national legislation governing the sale of consumer goods. Such rights are not affected by the warranties provision outlined in this document.

